

In **Life Skills** we will explore 'Relationships'. We will use our ROCK rules and explore different scenarios to learn about friendships, feeling lonely, managing arguments, behaviour, bullying, words and actions, and respect for others.

In **Design and Technology (DT)** we will be learning how to join materials together and thinking about how we can make structures more secure. We will be learning how to make sliders and leavers and adding these to our castle designs. We will also be considering the correct materials to make our castles.

In **Science** we will explore local habitats to identify and name living things and begin to understand how animals depend on one another for food and shelter. We will be learning about the basic needs of humans for survival, including the importance of exercise, nutrition and good hygiene. We will also learn how human offspring grow and change over time into adulthood.

In **Geography** we will explore atlases, maps and cardinal compass points. We will think about where castles were built and why. Following our trip to Windsor Castle, we will be creating our own map of where it is located and use a key to describe the geographical features.

In **History** we will be learning about the Monarchy alongside looking at different castles around the UK. We will be comparing the lives of the people who lived and worked in castles in the past and present.

In **Art** we will be exploring the work of significant still life artists and still life techniques. They explore a wide variety of still life and learn about the use of colour and composition. They create still life arrangements and artwork.

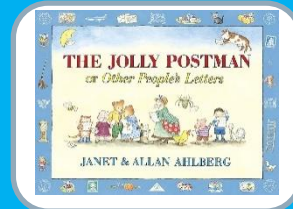
In **Music** we celebrate a wide range of musical style and will be listening, singing, composing and performing. We will also begin to learn to play the recorder in preparation for our performance in Church.

In **Computing** we will be learning about Programming: Algorithms and debugging as well as learning about computing systems and networks – Technology around us.

In **RE** we are learning about leaders and teachers, along with why and how Harvest is celebrated across the world. We will also be learning about the Christmas story.

In **Maths** we will consolidate our learning on place value, addition and subtraction - deepening our learning from Year 1. We will be adding and subtracting numbers within 100, using our knowledge of place value to help us partition numbers with a larger value. We will also be recapping counting in 2s 5s and 10s before furthering our knowledge and begin counting in 3s.

Castles



Key Vocabulary - English

Punctuation – Full stop . Capital Letter, exclamation mark !

Comma ,

Grammar – coordination - 'and', 'because', 'if' and 'when' to join ideas, subordination - 'because', 'if', 'while' and 'until', expanded noun phrase - an adjective or list of adjectives used directly before a noun.

Reading - Fluency - reading words without sounding out, having good pace and reading with expression.
Inference - finding clues in the text to help answer questions.

Key Vocabulary - Maths

Calculation Vocabulary - addition, adding, how many altogether, total, subtraction, fewer, difference, less, equal to, the same value as, multiplication, times, repeated additions, division, sharing, divide.

Statistics Vocabulary - graph, pictogram, table, chart, information, data, statement.

Geography topic words:

Fieldwork - Visiting a place outside, to collect data and learn about the place.

Human feature - A feature that has been made by humans, such as a shop, road and school.

Observation - The action of watching something carefully.

Physical feature - A feature that has formed naturally, such as a mountain, lake and river.

Man-made - Something created by humans

Natural - Something found in nature that has not been created by humans.

Art and Design topic words:

Composition - The way objects have been arranged in an artwork.

Cool colour - A colour that reminds people of cool things, such as water and shade.

Foreground - The part of an artwork that seems closest to the person looking at it.. **Subject matter** - The objects shown in an artwork.

Texture - The roughness or smoothness of an artwork.

Warm colour - A colour that reminds people of warm things, such as fire and heat.

Castles

PE is on

XXX

for

XXX Class



Supporting learning at home:

- Daily reading
- Spelling practise
- Home Learning challenges completed when possible.

Home Learning Challenges

Select from the list below the activities that you would like to do as your home Learning Challenges. You can present your challenges in anyway. Have fun and be creative.

Life Skills

Explain to your parents/grandparents what the ROCK rules stand for in our PSHE lessons.



My Habitat

Look around your garden/local green space. Which animals live in these habitats?

Share it Out

Find a bag of apples/sweets/biscuits. How could you share these with other members in your family? How many would they each have? What if there was one less/more member in your family? What if there was one less/more object?

Snuggly Stories

Choose your favourite winter or Christmas story and write a book review.

Fact File

Create a fact file listing the characteristics of the animal classifications: 'Mammals', 'Reptiles', 'Amphibians', 'Fish', 'Birds' and 'Insects'.

Christmas Around the World

Find out how Christmas is celebrated in different countries and cultures. Choose a way to share this information with your friends in your class.